

# *Curtain Accessories*



*Curtain Lining, Interlining  
and Buckram*



*Curtain Tapes, Hooks  
and Accessories*

# 100% COTTON SATEEN LINING

*Lining*

- ◆ 100% Cotton
- ◆ DYED FAST TO LIGHT to give maximum colour fastness when exposed to sunlight
- ◆ Choice of 4 QUALITIES - Standard, Deluxe, Luxury or Platinum
- ◆ SMOOTH texture and EXCELLENT durability
- ◆ Machine washable at 40°C/Dry cleanable
- ◆ Sample SHADE CARD and PRODUCT FEELER & INFORMATION swatch available on request



## STANDARD QUALITY 137cm (54") width

### CL54C CREAM 137cm (54")

*Stock Unit* 75m PIECE (approx.) creased ½ width  
*Construction* 72 x 96

### CL54W WHITE 137cm (54")

*Stock Unit* 75m PIECE (approx.) creased ½ width  
*Construction* 72 x 96

### CL54I IVORY 137cm (54")

*Stock Unit* 75m PIECE (approx.) creased ½ width  
*Construction* 72 x 96

## LUXURY QUALITY 137cm (54") width ONLY

### CLUX54C CREAM 137cm (54")

*Stock Unit* 100m PIECE (approx.) creased ½ width  
*Construction* 72 x 116

- ◆ Solprufe 63 treated

### CLUX54I IVORY 137cm (54")

*Stock Unit* 100m PIECE (approx.) creased ½ width  
*Construction* 72 x 116

- ◆ Solprufe 63 treated

NOT AVAILABLE IN WHITE

## DELUXE QUALITY 137cm (54") width ONLY

### C6101C CREAM 137cm (54")

*Stock Unit* 75m PIECE (approx.) creased ½ width  
*Construction* 72 x 96

### C6101W WHITE 137cm (54") (not shown)

*Stock Unit* 75m PIECE (approx.) creased ½ width  
*Construction* 72 x 96

### C6101I IVORY 137cm (54") (not shown)

*Stock Unit* 75m PIECE (approx.) creased ½ width  
*Construction* 72 x 96

- ◆ *Construction is the number of WARP (vertical) threads by the number of WEFT (horizontal) threads per square inch*



- ◆ *Sample SHADE CARD and PRODUCT FEELER & INFORMATION swatch available on request*



# 100% COTTON SATEEN LINING

*Lining*

**PLATINUM QUALITY**  
**137cm (54") width ONLY**

- ◆ *The ULTIMATE lining on the market*
- ◆ *Teflon™ - PROTECTS lining from the effects of soiling and moisture*
- ◆ *Solprufe 63 treated - DYED FAST TO LIGHT to give maximum colour fastness exposed to sunlight*

**CLUXSG54C CREAM 137cm (54")**

**Stock Unit** 75m PIECE (approx.)  
 creased ½ width

**Construction** 72 x 116

**CLUXSG54I IVORY 137cm (54")**

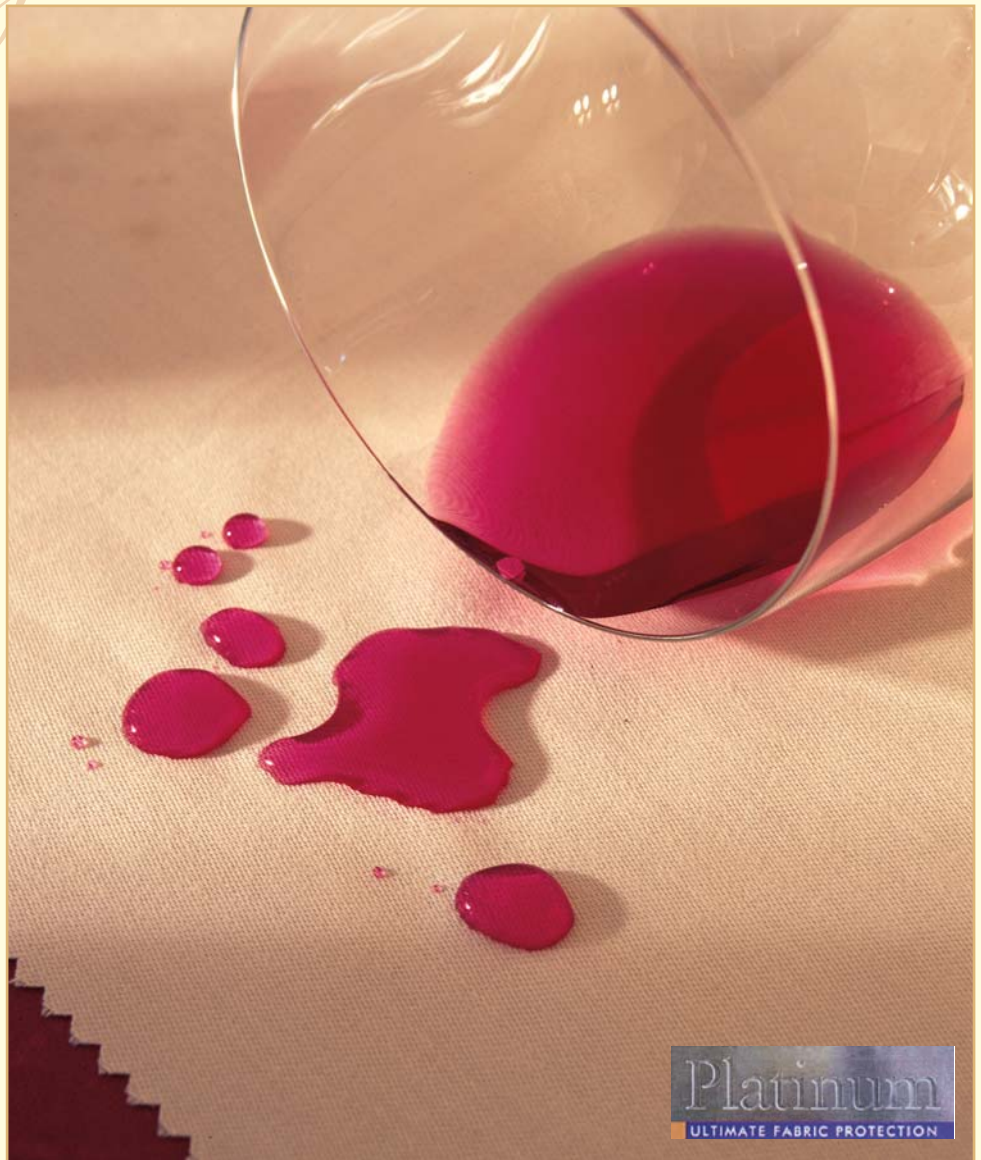
**Stock Unit** 75m PIECE (approx.)  
 creased ½ width

**Construction** 72 x 116

**CLUXSG54W WHITE 137cm (54")**

**Stock Unit** 75m PIECE (approx.)  
 creased ½ width

**Construction** 72 x 116



- ◆ *Protect your investment - long lasting INVISIBLE protection*
- ◆ *Looks newer for longer - treated fabrics RESIST stains and dirt, requires FEWER cleanings*
- ◆ *Resists soiling - airborne dirt and dust DOES NOT cling as firmly, can be more easily VACUUMED away*
- ◆ *Resists water and oil based stains - treated fabric RESIST stains from rain and condensation on windows and oil based stains resulting from spills or dirty fingers*
- ◆ *Cleans well - most stains can be SPOT CLEANED without taking down the curtains*

**2832 SOILGUARD STAIN RESISTANT SPRAY**

**Stock Unit** EACH

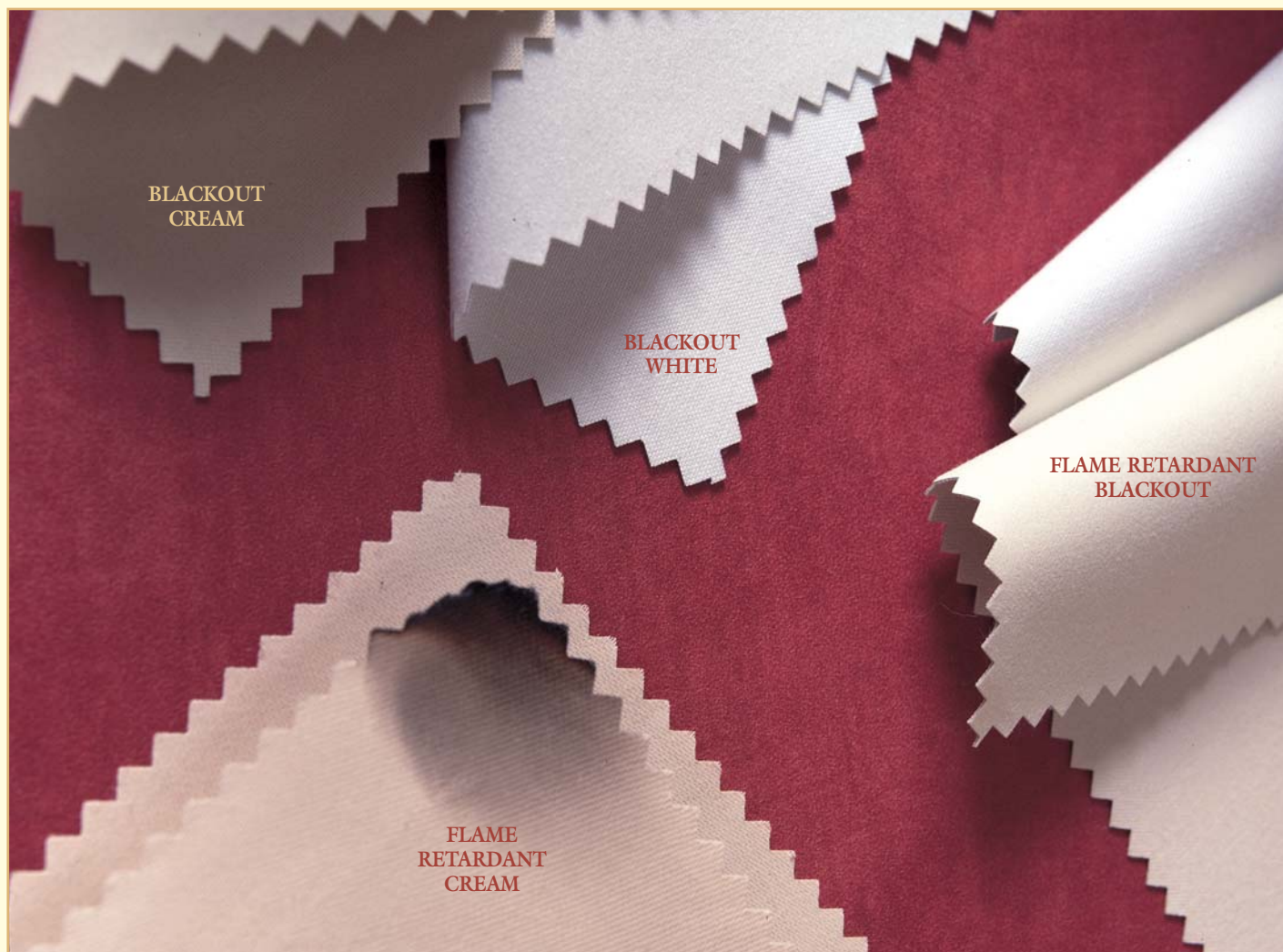
- ◆ *400ml Aerosol spray can*
  - ◆ *CFC free - contains NO propellant alleged to damage the ozone*
  - ◆ *Unique formulation\* to give protection against oil and water based stains*
  - ◆ *Can be used on most fabrics including carpet, curtains, upholstery etc.*
- \*When used regularly*



# SPECIALITY LINING

# Speciality Lining

- ◆ *SMOOTH texture and EXCELLENT durability*
- ◆ *Sample SHADE CARD available on request*



## BLACKOUT LINING

- ◆ *EXCELLENT quality lining*
- ◆ *BEAUTIFUL soft feel*
- ◆ *100% BLACKOUT - total light control.*  
*Ideal for children's bedrooms*
- ◆ *3 PASS - has 3 separate coatings*
- ◆ *Finished on BOTH sides in the same shade*
- ◆ *INCREASED sound and thermal insulation properties*
- ◆ *Can help to CONSERVE energy and reduce fuel costs*

### CLBO54CC CREAM BLACKOUT

**Stock Unit** 50m PIECE (approx.) Rolled full width on tube  
**Width** 137cms (54") ONLY

3 pass blackout Cream on Cream

### CLBO54WW WHITE BLACKOUT

**Stock Unit** 50m PIECE (approx.) Rolled full width on tube  
**Width** 137cms (54") ONLY

3 pass blackout White on White  
52% Polyester/48% Cotton

### CLBO6942II IVORY BLACKOUT –

**Not shown**

**Stock Unit** 50m PIECE (approx.) Rolled full width on tube  
**Width** 137cms (54") ONLY

3 pass blackout Ivory on Ivory

### CLBO6942WW WHITE BLACKOUT –

**Not shown**

**Stock Unit** 50m PIECE (approx.) Rolled full width on tube  
**Width** 137cms (54") ONLY

3 pass blackout White on White  
70% Polyester/30% Cotton

## FLAME RETARDANT LINING

### CLFR54C CREAM

**Stock Unit** 50m PIECE (approx.) creased ½ width  
**Width** 137cms (54") ONLY

**Construction** 72 x 96

100% cotton

Machine washable at 40°C/dry cleanable  
Durable flame retardant lining - conforms to  
BS5867 part 2b

Available in Cream only

- ◆ *FLAME RETARDANT Blackout lining also available conforms to BS5867 part 2b*

**Code no.s** CLBO54CCFR CREAM FLAME RETARDANT BLACKOUT  
CLBO54WWFR WHITE FLAME RETARDANT BLACKOUT



# SPECIALTY LINING

# Specialty Lining

- ◆ *SMOOTH texture and EXCELLENT durability*
- ◆ *Sample SHADE CARD and PRODUCT FEELER & INFORMATION swatch available on request*

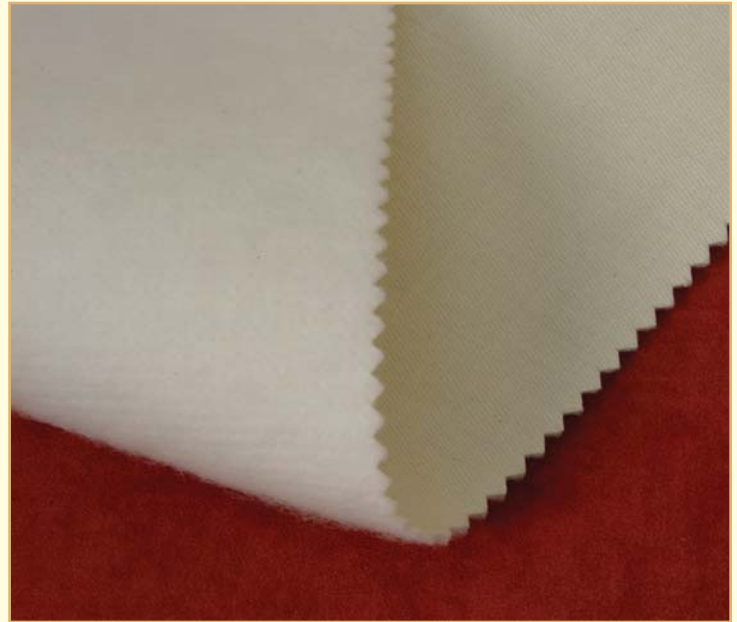
## C6418DUO COTTON DUO FLEECE IVORY

255grms m<sup>2</sup>

*Stock Unit* 25m ROLL rolled full width

*Width* 137cm (54")

- ◆ *100% Cotton Lining BONDED to a polyester fleece*
- ◆ *Ideal for Roman Blinds*
- ◆ *Dry clean ONLY*

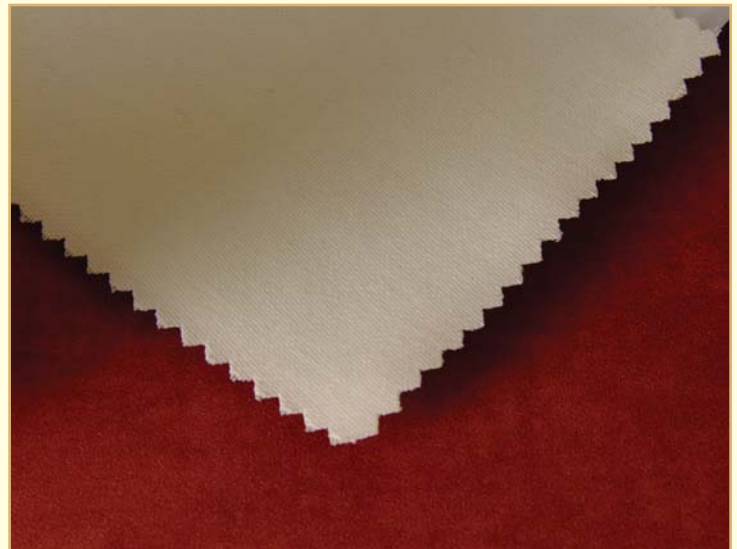


## CLSS541 SUPER SOFT IVORY LINING 137cm (54")

*Stock Unit* 50m PIECE (approx.) creased ½ width

*Construction* 112 x 48

- ◆ *Cotton rich Lining*
- ◆ *52% cotton/48% polyester*



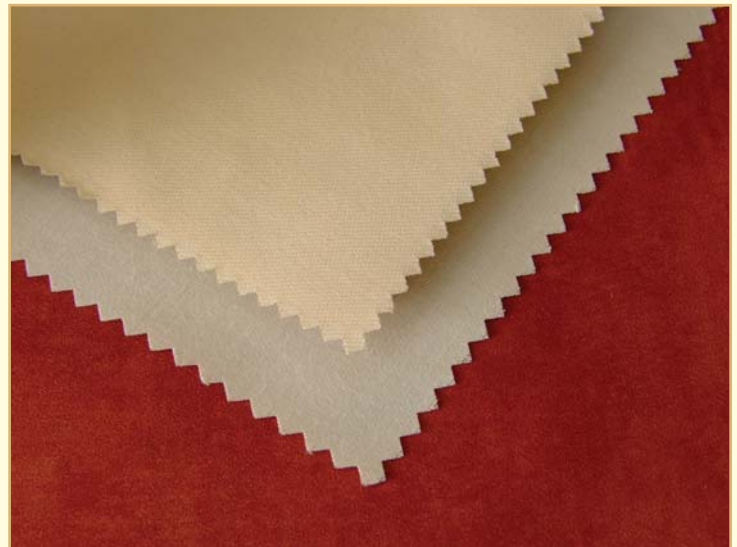
## C6216 CREASE RESIST LINING 137cm (54")

*Width* 75m PIECE (approx.) creased ½" width

*Available in* CREAM or IVORY

*Construction* 72 x 96

- ◆ *DYED FAST TO LIGHT*
- ◆ *100% Cotton*



# Interlining CURTAIN INTERLINING – 100% COTTON

- ◆ Used to improve the **DRAPE** and **HANG** of curtains. Produces a luxury appearance
- ◆ Choice of 7 weights - available in 100% Cotton or Man Made
- ◆ Will help to **IMPROVE** sound and thermal insulation properties
- ◆ **DRY CLEAN ONLY** - a small amount of shrinkage will occur
- ◆ Sample **SHADE CARD** and **PRODUCT FEELER & INFORMATION** swatch available on request



## COTTON INTERLINING 137cm (54") width

### **C304 NATURAL 180grms m<sup>2</sup>**

**Stock Unit** 50m ROLL rolled full width  
**Width** 137 cms (54")  
100% Cotton Twill domette

### **C6256 NATURAL 200grms m<sup>2</sup>**

**Stock Unit** 50m ROLL rolled full width  
**Width** 137 cms (54")  
100% Cotton Twill domette

### **C6277 BLEACHED 200grms m<sup>2</sup>**

**Stock Unit** 50m ROLL rolled full width  
**Width** 137 cms (54")  
100% Cotton Twill domette

### **C6244 NATURAL 268grms m<sup>2</sup>**

**Stock Unit** 50m ROLL rolled full width  
**Width** 137 cms (54")  
100% Cotton Twill

### **C7000 NATURAL 280grms m<sup>2</sup>**

**Stock Unit** 50m ROLL rolled full width  
**Width** 137 cms (54")  
100% Cotton Plain Weave

### **C6438 NATURAL 260grms m<sup>2</sup>**

**Stock Unit** 50m ROLL rolled full width  
**Width** 137 cms (54")  
100% Cotton PRE-SHRUNK Twill



- ◆ Sample **SHADE CARD** and **PRODUCT FEELER & INFORMATION** swatch available on request

# CURTAIN INTERLING – MAN MADE

*Interlining*

- ◆ Used to improve the DRAPE and HANG of curtains. Produces a luxury appearance
- ◆ Choice of 7 weights - available in 100% Cotton or Man Made
- ◆ Will help to IMPROVE sound and thermal insulation properties
- ◆ DRY CLEAN ONLY - a small amount of shrinkage will occur
- ◆ Sample SHADE CARD and PRODUCT FEELER & INFORMATION swatch available on request



## **C256 WHITE 160grms m<sup>2</sup>**

**Stock Unit** 50m ROLL rolled full width  
**Width** 137 cms (54")  
 70% Polyester/30%Viscose  
 Stitch bonded

## **C6401 WHITE 180grms m<sup>2</sup>**

**Stock Unit** 50m ROLL rolled full width  
**Width** 137 cms (54")  
 64% Polyester/36%Viscose  
 Stitched web

## **C6405FR WHITE 200grms m<sup>2</sup> FLAME RETARDANT**

**Stock Unit** 50m ROLL rolled full width  
**Width** 137 cms (54")  
 100% Polyester  
 Stitched web  
 Inherently FR - Conforms to BS 5867 part 2b  
 (Ensure maximum temperature during drying does not exceed 110°C)

## **C256/240 WHITE 240grms m<sup>2</sup>**

**Stock Unit** 50m ROLL rolled full width  
**Width** 137 cms (54")  
 70% Polyester/30%Viscose  
 Stitch Bonded

## **C6406 WHITE 250grms m<sup>2</sup>**

**Stock Unit** 50m ROLL rolled full width  
**Width** 137 cms (54")  
 64% Polyester/36%Viscose  
 Stitch Bonded

## **C6414 NATURAL 285grms m<sup>2</sup> "ARATEX"**

**Stock Unit** 25m ROLL rolled half width  
**Width** 137 cms (54")  
 76% Polyester/21%Viscose/3%Polyamide  
 Stitched web

## **C6191 NATURAL 410grms m<sup>2</sup>**

**Stock Unit** 50m ROLL rolled full width  
**Width** 137 cms (54")  
 72% Cotton/28% Man Made  
 Natural Bump

## **C6195 NATURAL 410grms m<sup>2</sup>**

**Stock Unit** 50m ROLL rolled full width  
**Width** 137 cms (54")  
 82% Cotton 18% Viscose  
 Twill

## **C6194 BLEACHED 410grms m<sup>2</sup>**

**Stock Unit** 50m ROLL rolled full width  
**Width** 137 cms (54")  
 65% Cotton 35% Viscose  
 Twill



# BUCKRAM

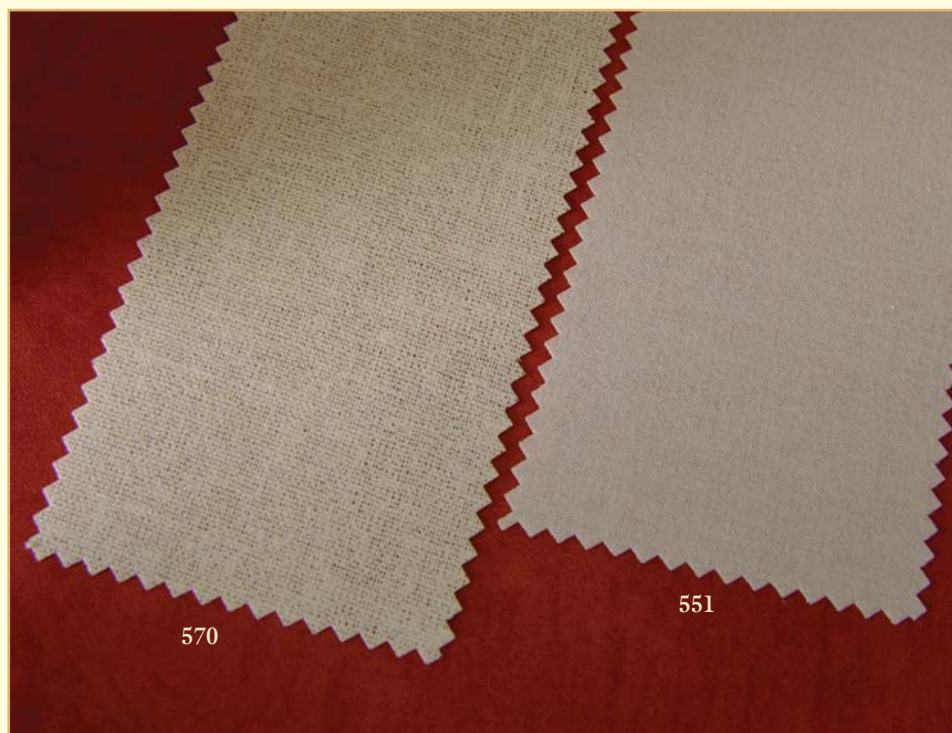
- ◆ All cotton buckram is packed in STUNNING gold dispenser boxes – unless stated
- ◆ Dispenser box keeps roll neatly contained and PREVENTS rolls from unravelling and becoming damaged, soiled and unusable
- ◆ Dry clean ONLY recommended by professional dry cleaners
- ◆ Sample SHADE CARD and PRODUCT FEELER & INFORMATION swatch available on request



## 100% COTTON BUCKRAM - SEW ON SANFORIZED\*

- 5568 100mm (4") width**  
Stock Unit 100m ROLL in DISPENSER BOX
- 5569 125mm (5") width**  
Stock Unit 100m ROLL in DISPENSER BOX
- 5570 150mm (6") width**  
Stock Unit 100m ROLL in DISPENSER BOX

- ◆ Permanent STIFFENED sew on buckram
- ◆ Can be WASHED at 40°C
- ◆ LIGHT weight - ideal for use on Nets, Sheers and Voiles
- ◆ Treated with PVA resin to form a CRISP resilient finish
- ◆ \*Sanforized is a registered trademark



## 100% COTTON BUCKRAM - IRON ON

**5554 100mm (4") width**  
Stock Unit 50m ROLL  
in DISPENSER BOX

**5555 125mm (5") width**  
Stock Unit 50m ROLL  
in DISPENSER BOX

**5556 150mm (6") width**  
Stock Unit 50m ROLL  
in DISPENSER BOX

- ◆ FUSIBLE - glued BOTH sides
- ◆ Use domestic DRY iron on "warm"/150°C setting
- ◆ Open weave cotton base, starched and treated with specially formulated resin
- ◆ The ORIGINAL & BEST Iron On buckram

## 100% COTTON BUCKRAM - SEW ON

**5564 100mm (4") width**  
Stock Unit 100m ROLL  
in DISPENSER BOX

**5565 125mm (5") width**  
Stock Unit 100m ROLL  
in DISPENSER BOX

**5566 150mm (6") width**  
Stock Unit 100m ROLL  
in DISPENSER BOX

- ◆ Cotton base, treated with PVA resin

## 100% COTTON BUCKRAM - IRON ON

**5704SS 100mm (4")**  
Stock Unit 100m ROLL in POLY BAG

**5705SS 125mm (5")**  
Stock Unit 100m ROLL in POLY BAG

**5706SS 150mm (6")**  
Stock Unit 100m ROLL in POLY BAG

- ◆ FUSIBLE - glued ONE side ONLY
- ◆ Use domestic DRY iron on "warm"/150°C setting

## 100% COTTON BUCKRAM - IRON ON

**55102 102mm width**  
Stock Unit 50m ROLL in POLY BAG

**55127 127mm width**  
Stock Unit 50m ROLL in POLY BAG

**55152 152mm width**  
Stock Unit 50m ROLL in POLY BAG

- ◆ Adhesive BOTH sides - spray coated
- ◆ Use domestic DRY iron on "warm"/150°C setting



# BUCKRAM

- ◆ TRANSLUCENT
- ◆ TRANSLUCENT Buckram packed in STUNNING gold dispenser box
- ◆ Dispenser box keeps roll neatly contained and PREVENTS rolls from unravelling and becoming soiled and unusable
- ◆ Dry clean ONLY recommended by professional dry cleaners
- ◆ Sample SHADE CARD and PRODUCT FEELER & INFORMATION swatch available on request

## 100% POLYPROPYLENE BUCKRAM SEW ON

**5803 76mm (3") width**

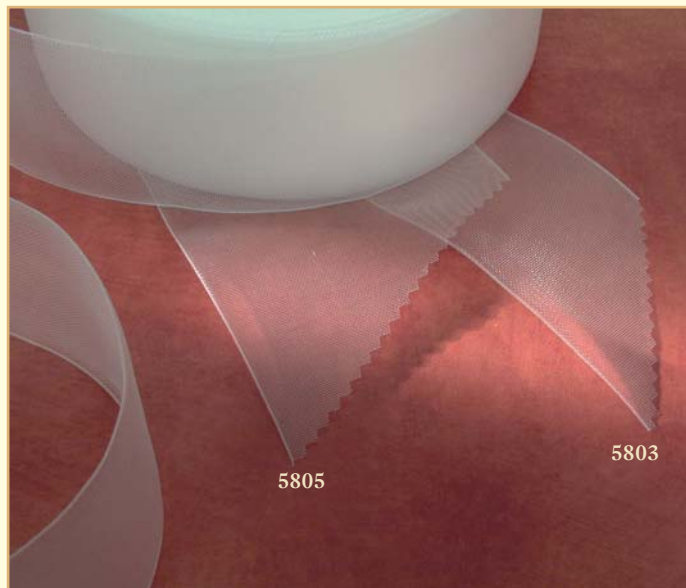
*Stock Unit* 100m ROLL in DISPENSER BOX

**5805 125mm (5") width**

*Stock Unit* 100m ROLL in DISPENSER BOX

- ◆ TRANSLUCENT - ideal for Sheers, Nets, Voiles and Eyelet headings
- ◆ Use domestic DRY iron on "cool" / setting 1
- ◆ Can be WASHED at 40°C

- ◆ Sample SHADE CARD and PRODUCT FEELER & INFORMATION swatch available on request



## HESSIAN BUCKRAM

- ◆ For best results use a layer of INTERLINING between the buckram and the face fabric

### SINGLE PLY STIFFENED HESSIAN

**5582 455mm (18") width**

*Stock Unit* 33m ROLL (approx.)

**5583 910mm (36") width**

*Stock Unit* 33m ROLL (approx.)

- ◆ 330 grms m<sup>2</sup>

### TWO PLY STIFFENED HESSIAN

**5572 305mm (12") width**

*Stock Unit* 33m ROLL (approx.)

**5575 455mm (18") width**

*Stock Unit* 33m ROLL (approx.)

**5576 910mm (36") width**

*Stock Unit* 33m ROLL (approx.)

- ◆ 600 grms m<sup>2</sup>



## VILENE

### ST133 FUSIBLE TIEBACK/PELMET STIFFENER

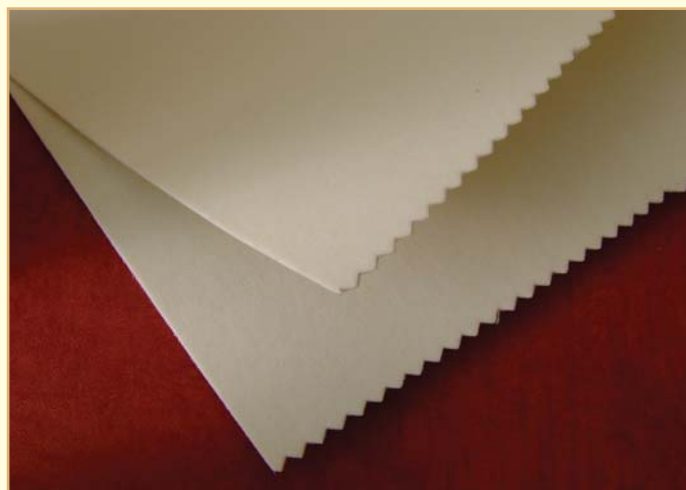
*Stock Unit* 25m ROLL

*Choice of 3 widths* 30cm, 45cm and 90cm

*Composition* 60% Wood Pulp/40% Polyester

*Colour* Beige/Grey

- ◆ Extra firm and stable
- ◆ Easy to cut and handle for shaped tiebacks and pelmets
- ◆ Fusible ONE side
- ◆ Fabric can be ironed on with DOMESTIC iron





# CURTAIN HEADING TAPES

## Hunter & Hyland Brand

◆ 53mm, 76mm and 130mm pencil pleat tapes -  
 PERFECT for crisp, refined pencil pleats on Curtains, Nets, Sheers and Voiles



### 19253 53mm (2") PENCIL PLEAT TAPE

**Stock Unit** 100m ROLL in POLY BAG  
 2 rows corded pockets  
 2 FAINT green sewing lines  
 Single sided

No. of drawcards	Pleats per metre	Depth of pleat	Fullness
2	37	18mm	3

**Fibre content** 54% Polyester, 46% Polypropylene



### 19275 76mm (3") PENCIL PLEAT TAPE

**Stock Unit** 50m ROLL in DISPENSER BOX

### 19275500 76mm (3") PENCIL PLEAT TAPE

**Stock Unit** 500m WORKROOM LAYERED BOX  
 3 rows corded pockets  
 2 FAINT green sewing lines  
 Single sided

No. of drawcards	Pleats per metre	Depth of pleat	Fullness
3	38	18mm	3

**Fibre content** 54% Polyester, 46% Polypropylene

◆ Fullness is the multiplication factor used to determine the amount of tape/fabric required to give the optimum effect to the curtain heading (ie a 2m pole x fullness of 3 = 6m of heading tape)

◆ Brass curtain hooks are shown to give an indication of pocket location

◆ See page N13 for details of curtain hooks



### 192130 130mm (5") PENCIL PLEAT TAPE

**Stock Unit** 50m ROLL in POLY BAG  
 6 rows corded pockets  
 2 FAINT green sewing lines  
 Single sided

No. of drawcards	Pleats per metre	Depth of pleat	Fullness
4	38	18mm	3

**Fibre content** 54% Polyester, 46% Polypropylene

◆ Ideal for extra long curtains, if hand made headings are not used



### 19475 76mm (3") REVERSIBLE PENCIL PLEAT TAPE

**Stock Unit** 50m ROLL in DISPENSER BOX

### 19475500 76mm (3") REVERSIBLE PENCIL PLEAT TAPE

**Stock Unit** 500m WORKROOM LAYERED BOX  
 3 rows corded pockets  
 NO sewing lines  
 Double sided - pockets BOTH sides for ease and flexibility of use

No. of drawcards	Pleats per metre	Depth of pleat	Fullness
3	28	18mm	2½-3

**Fibre content** 55% Polyester, 45% Polypropylene



# CURTAIN HEADING TAPES

## Hunter & Hyland Brand

**28476 76mm (3") SUPERWOVEN PENCIL PLEAT TAPE**  
**Stock Unit** 50m ROLL in DISPENSER BOX

**28476500 76mm (3") SUPERWOVEN PENCIL PLEAT TAPE**  
**Stock Unit** 500m WORKROOM LAYERED BOX  
 3 rows woven pockets  
 2 FAINT green sewing lines  
 Single sided

No. of drawcords	Pleats per metre	Depth of pleat	Fullness
3	36	18mm	2-2½

**Fibre content** 38% Polyester, 62% Polypropylene

- ◆ WOVEN pocket - strong secure pocket, helps to prevent pocket sag

**24275 76mm (3") MONOWOVEN PENCIL PLEAT TAPE**  
**Stock Unit** 50m ROLL in DISPENSER BOX

**24275500 76mm (3") MONOWOVEN PENCIL PLEAT TAPE**  
**Stock Unit** 500m WORKROOM LAYERED BOX  
 3 rows WOVEN pockets  
 2 FAINT green sewing lines  
 Single sided

No. of drawcords	Pleats per metre	Depth of pleat	Fullness
3	36	10mm	2½-3

**Fibre content** 59% Polyester, 41% Polypropylene

- ◆ With MONOFILAMENT - gives extra rigidity to curtain heading
- ◆ SUPERIOR curtain heading tape
- ◆ Forms perfect well defined pencil pleats for heavy fabric/large curtains
- ◆ WOVEN pocket - strong secure pocket, helps to prevent pocket sag

**15290 90mm (3½") PINCH PLEAT TAPE**

**Stock Unit** 50m ROLL in DISPENSER BOX  
 2 rows WOVEN pockets  
 2 black sewing lines  
 Single sided

No. of drawcords	Pleats per metre	Depth of pleat	Fullness
2	26	20mm	1½-2

**Fibre content** 30% Polyester, 70% Polypropylene

- ◆ Luxury tape for FANNED headings

**30175 76mm (3") MULTI POCKET PENCIL PLEAT TAPE**  
**Stock Unit** 50m ROLL in DISPENSER BOX

**30175500 76mm (3") MULTI POCKET PENCIL PLEAT TAPE**  
**Stock Unit** 500m WORKROOM LAYERED BOX  
 8 rows corded pockets  
 NO sewing lines  
 Single sided

No. of drawcords	Pleats per metre	Depth of pleat	Fullness
3	70	18mm	2-2½

**Fibre content** 50% Polyester, 50% Polypropylene

- ◆ Choice of 8 pocket positions (hooks shown represent pocket position)
- ◆ Excellent for accurate adjustment of curtain height



28476

24275



15290

30175



# CURTAIN HEADING TAPES

## Hunter & Hyland Brand



### “VELCRO” COMPATIBLE PENCIL PLEAT TAPE

- ♦ Ideal for pelmets, valances, nets Austrian and Festoon blinds
- ♦ As the drawcords are pulled and the pleats are formed, yarn will “raise” to form “loops” which will adhere to hook part of Hunter & Hyland’s Hook and Loop tape (see [page N17](#))

### 29826 26mm (1") PENCIL PLEAT TAPE

Stock Unit 100m ROLL in POLY BAG

Continuous pockets  
2 FAINT green sewing lines  
Single sided

No. of drawcords	Pleats per metre	Depth of pleat	Fullness
2	34	10mm	3

Fibre content 33% Polyester, 16% Polyamide, 51% Polypropylene

### 29853 53mm (2") PENCIL PLEAT TAPE

Stock Unit 100m ROLL in POLY BAG

Continuous pockets  
2 FAINT green sewing lines  
Single sided

No. of drawcords	Pleats per metre	Depth of pleat	Fullness
2	34	10mm	3

Fibre content 26% Polyester, 19% Polyamide, 55% Polypropylene

### 29875 76mm (3") PENCIL PLEAT TAPE

Stock Unit 50m ROLL in DISPENSER BOX

### 29875500 76mm (3") PENCIL PLEAT TAPE

Stock Unit 500m WORKROOM LAYERED BOX

Continuous pockets  
2 FAINT green sewing lines

No. of drawcords	Pleats per metre	Depth of pleat	Fullness
3	34	10mm	3

Fibre content 33% Polyester, 16% Polyamide, 51% Polypropylene



### CURTAIN HEADING TAPES Hunter & Hyland Brand

- ♦ PINCH pleat and ALL 75mm (3") PENCIL pleat tapes are ATTRACTIVELY packed in STUNNING gold dispenser box (as is the range of COTTON BUCKRAM)
- ♦ Dispenser box keeps roll neatly contained and PREVENTS Rolls from UNRAVELLING and becoming soiled and unusable
- ♦ ALL 76mm (3") pencil pleat tapes available in 50 metre DISPENSER box or 500 metre WORKROOM layered box
- ♦ SUPERIOR quality product
- ♦ Fully washable and can be ironed (use iron setting 60°C/1 dot)
- ♦ Sample SWATCH available on request



# CURTAIN HEADING TAPE

## 3060W 13mm TIE ON TAPE WHITE

*Stock Unit* 1000m ROLL in POLY BAG  
100% Cotton

## 3060U 13mm TIE ON TAPE UNBLEACHED

*Stock Unit* 1000m ROLL in POLY BAG  
100% Cotton

## 302025 25mm COTTON HEADING TAPE

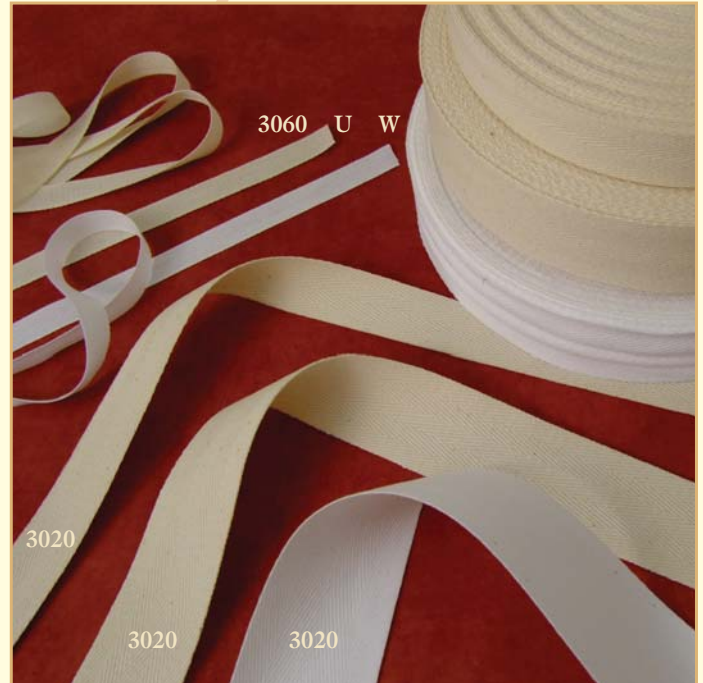
*Stock Unit* 33m POLY BAG  
*Colour* Natural or Dyed

## 302038 38mm COTTON HEADING TAPE

*Stock Unit* 33m POLY BAG  
*Colour* Natural or Dyed

## 302051 51mm COTTON HEADING TAPE

*Stock Unit* 33m POLY BAG  
*Colour* Natural or Dyed



### Colours available on 3020 cotton heading tapes

Beige	Grey
Black	White
Blue	Natural
Bottle Green	

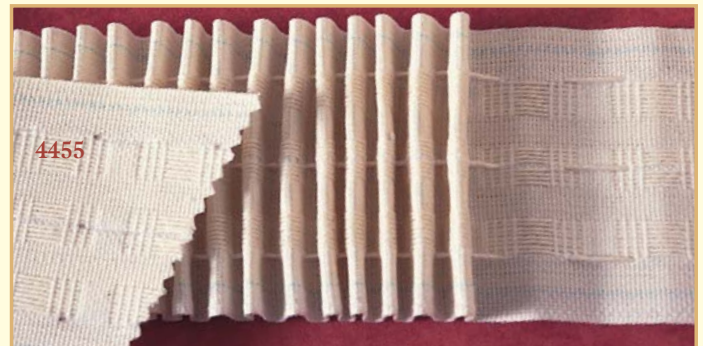
- ◆ Please specify COLOUR when ordering
- ◆ Limited colour range available on 25mm and 51mm




## 4455 75mm (3") REVERSIBLE PENCIL PLEAT TAPE

*Stock Unit* 50m BOX  
*Colour* Natural  
*No. of drawcords* 3

3 rows corded pocket  
61% Cotton/39% Polyester  
◆ Reversible - Pockets BOTH sides



- ◆ We also stock a wide range of  heading tapes and accessories

# CURTAIN HOOKS

# Curtain Hooks



## 1077 CURTAIN HOOK BRASS

Stock Unit BOX 200  
 Length 25mm  
 Wire diameter 1.25mm  
 ♦ Solid Brass

## 2081 PIN on HOOKS

Stock Unit BOX 1000  
 Wire diameter 1.70mm Length 35mm  
 ♦ Zinc Plated  
 ♦ Attractively packed in STUNNING gold dispenser box  
 ♦ Extra SHARP point  
 ♦ Ideal for hand made Pinch pleat and Goblet pleat headings

## GENERAL PURPOSE CURTAIN HOOKS

### 2510 VALANCE HOOKS

Stock Unit BOX 100  
 Wire diameter 1.25mm Length 31mm  
 ♦ Brassed

### 500 NYLON CURTAIN HOOKS

Stock Unit BOX 1000  
 ♦ White Length 30mm  
 ♦ Suitable for up to MEDIUM weight curtains

### 2086 CURTAIN HOOKS

Stock Unit BOX 200

### 2086L CURTAIN HOOKS

Stock Unit BOX 1000  
 Wire diameter 1.20mm Length 27mm  
 ♦ Zinc Plated  
 ♦ Box 1000 hooks attractively packed in STUNNING gold dispenser box  
 ♦ Suitable for up to MEDIUM HEAVY weight curtains

### 2085 CURTAIN HOOKS

Stock Unit BOX 200

### 2085L CURTAIN HOOKS

Stock Unit BOX 1000  
 Wire diameter 1.20mm Length 27mm  
 ♦ Electro Brassed  
 ♦ Box 1000 hooks attractively packed in STUNNING gold dispenser box  
 ♦ Suitable for up to MEDIUM HEAVY weight curtains



## LONG STEM SEW ON CURTAIN HOOKS

♦ Solid Brass

### 38 BRASS SEW ON CURTAIN HOOK

Stock Unit BOX 100  
 Wire diameter 1.25mm Length 89mm

### 331 BRASS SEW ON CURTAIN HOOK

Stock Unit BOX 100  
 Wire diameter 1.25mm Length 75mm

### 63263 BRASS SEW ON CURTAIN HOOK

Stock Unit BOX 100  
 Wire diameter 1.25mm Length 63mm

### 63251 BRASS SEW ON CURTAIN HOOK

Stock Unit BOX 100  
 Wire diameter 1.25mm Length 51mm

♦ For details of Curtain Heading Tapes see pages N7, N8, N9 and N10



# CURTAIN HOOKS & RINGS

## SEW ON CURTAIN HOOKS

- ◆ For a PROFESSIONAL finish to hand sewn headings
- ◆ Solid Brass

### 608 BRASS SEW ON CURTAIN HOOK

Stock Unit BOX 100  
Wire diameter 1.25mm Length 31mm

### 627 BRASS SEW ON CURTAIN HOOK

Stock Unit BOX 100  
Wire diameter 1.25mm Length 38mm

### 2518 BRASS SEW ON CURTAIN HOOK

Stock Unit BOX 100  
Wire diameter 1.25mm Length 26mm

### 2618 BRASS SEW ON CURTAIN HOOK

Stock Unit BOX 100  
Wire diameter 1.25mm Length 39mm

### 624 BRASS SEW ON CURTAIN HOOK

Stock Unit BOX 100  
Wire diameter 1.25mm Length 31.5mm

### 2528 BRASS SEW ON CURTAIN HOOK

Stock Unit BOX 100  
Wire diameter 1.25mm Length 30mm

### 2418 BRASS SEW ON CURTAIN HOOK

Stock Unit BOX 100  
Wire diameter 1.25mm Length 39.5mm



## PLANISHED (FLATTENED TOP) SEW ON CURTAIN HOOKS

- ◆ PLANISHED hooks are flattened at the top of the hook for additional strength
- ◆ Solid Brass

### 624P BRASS SEW ON CURTAIN HOOK

Stock Unit BOX 100  
Wire diameter 1.25mm Length 31.5mm

### 2528P BRASS SEW ON CURTAIN HOOK

Stock Unit BOX 100  
Wire diameter 1.25mm Length 30mm

### 2618P BRASS SEW ON CURTAIN HOOK

Stock Unit BOX 100  
Wire diameter 1.25mm Length 39mm

## SEW ON CURTAIN RINGS

### 2 SOLID BRASS SEW ON CURTAIN RINGS

Code	Dimensions	Stock Unit
202	14.5mm x 11.5mm	BOX 200
204	19mm x 16mm	BOX 288
208	26mm x 20mm	BOX 100

- ◆ Brass polished

### 2256 CHROME PLATED SHOWER RINGS

Stock Unit EACH or BOX 100

Code	Dimensions
225635	35mm eye x 2.5mm wire diameter
225645	45mm eye x 3mm wire diameter

- ◆ Chrome plated Brass

### 5 HOLLOW BRASS SEW ON CURTAIN RINGS

Code	Dimensions	Stock Unit
508	13mm x 10.5mm	BOX 200
510	16mm x 13.5mm	BOX 200
512	19mm x 16.5mm	BOX 200
514	22mm x 18mm	BOX 200
516	25mm x 21mm	BOX 200
520	32mm x 27mm	BOX 200

- ◆ Brass polished





# CURTAIN DRAW RODS



## 5399 WOODEN CURTAIN DRAW RODS

**Stock Unit** EACH

**539940** 100cm (40")

◆ Available WALNUT (W), UNFINISHED (UF) or NATURAL POLISH (N)

◆ Can be STAINED or PAINTED to order

## 2399 WHITE CURTAIN DRAW RODS

**Stock Unit** EACH or BOX 25

**2399050** 50cm (20")

**2399075** 75cm (30")

**2399100** 100cm (40")

**2399125** 125cm (50")

◆ White plastic covered steel rod

## 6399 BRASS CURTAIN DRAW RODS

**Stock Unit** EACH

**639930** 75cm (30")

**639940** 100cm (40")

**639950** 125cm (50")

◆ Brass cased steel tube

◆ Brass draw rods can be MADE TO MEASURE - to your specific length

◆ POLISHED CHROME and SATIN NICKEL Draw Rods are available ex-stock



◆ Draw rod fixes to curtain ring eyelet or glider with SECURE "dog clip" spring fixing

◆ Simple, elegant, PRACTICAL and ECONOMICAL way of opening or closing drapes avoiding unnecessary handling of leading edge of curtain, preventing soiling and wear



## 4399 CLEAR PLASTIC DRAW RODS

**Stock Unit** EACH

**4399075** 75cm (30")

**4399100** 100cm (40")

**4399125** 125cm (50")

**4399150** 150cm (60")

◆ Clear plastic draw rod with steel core

◆ Draw rod fixes to curtain ring eyelet with secure "dog clip"

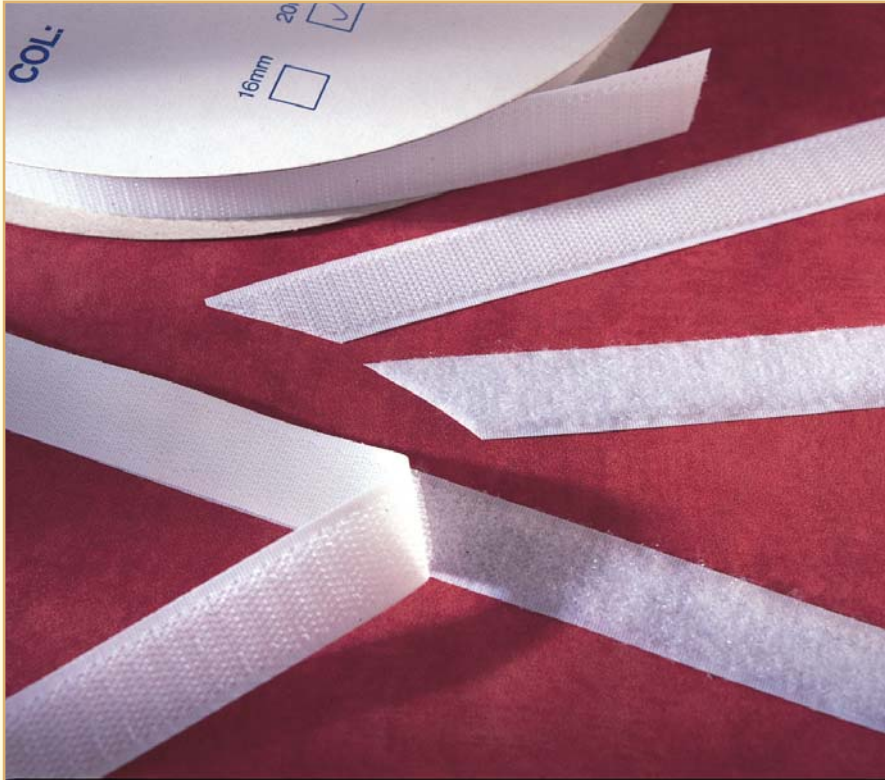
◆ Simple, elegant, PRACTICAL and ECONOMICAL way of opening or closing drapes avoiding unnecessary handling of leading edge of curtain preventing soiling and wear



# HOOK & LOOP TAPE and CREASE REMOVER

## HOOK & LOOP TAPE

- ◆ Easy to use. When pressed together the “hooks” grip the “loops” to form a tight secure closure, however they separate easily by peeling the two apart
- ◆ IDEAL for Loose Covers, Valances, Pelmets and Curtain Linings
- ◆ Other widths/colours available on request



### HOOK & LOOP TAPE - SEW ON 03TW 20mm WHITE TWIN PACK (HOOK & LOOP)

Stock Unit 25m FLANGED REEL

### 03HW WHITE HOOK ONLY

Stock Unit 25m FLANGED REEL

03HW20 20mm width

03HW38 38mm width

03HW50 50mm width

### 03LW WHITE LOOP ONLY

Stock Unit 25m FLANGED REEL

03LW20 20mm width

03LW38 38mm width

03LW50 50mm width

### HOOK & LOOP TAPE SELF ADHESIVE

#### 07TW 20mm WHITE TWIN PACK (HOOK & LOOP)

Stock Unit 25m FLANGED REEL

#### 07HW 20mm WHITE HOOK ONLY

Stock Unit 25m FLANGED REEL

#### 07LW 20mm WHITE LOOP ONLY

Stock Unit 25m FLANGED REEL

## CREASE REMOVER

### HHCR1 CREASE REMOVER 1 litre TRIGGER SPRAY

Stock Unit EACH

### HHCR5 CREASE REMOVER 5 litre REFILL BOTTLE

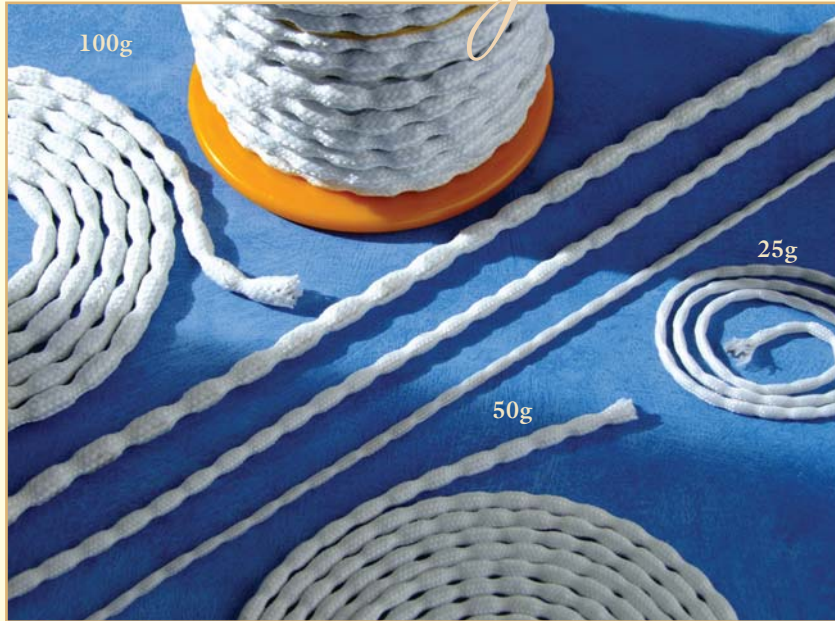
Stock Unit EACH

- ◆ Ideal for removing creases in Curtains and Soft Furnishings, etc
- ◆ Fresh smelling fragrance
- ◆ Easy to use



# LEADWEIGHT

## Leadweight



### LEADWEIGHTED TAPE

- ◆ Ideal to IMPROVE hang and drape of Nets, Sheers, Shower Curtains etc
- ◆ Covered in WHITE braided artificial silk

**15748026 25grms per METRE**  
*Stock Unit* 100m REEL

**15748050 50grms per METRE**  
*Stock Unit* 50m REEL

**15748100 100grms per METRE**  
*Stock Unit* 25m REEL



### LEADWEIGHT

- ◆ SEWN into the bottom corner HEM of every fabric width to provide extra weight for improved hanging of drapes

#### 789 SQUARE LEADWEIGHTS

Size	Stock Unit	Weight
25mm x 25mm	BOX 200 or SACK 1000	14g

#### 787 ROUND (PENNY) LEADWEIGHTS

Size	Stock Unit	Weight
19mm (¾") with 2 holes	BOX 200 or SACK 1000	7g
25mm (1") with 2 holes	BOX 200 or SACK 1000	10g
28mm (1½") with 2 holes	BOX 200 or SACK 1000	12g
32mm (1¼") with 2 holes	BOX 200 or SACK 1000	20g

#### 788 OBLONG LEADWEIGHTS

Size	Stock Unit	Weight
35mm x 22mm	BOX 200 or SACK 1000	18g per each weight

#### 5816503 PRE MADE POCKET TAPE for LEADWEIGHTS

*Stock Unit* 9.5m ROLL  
 228 pockets per reel, 60mm x 35mm pockets



# NET SUSPENSION *and* DOWELS

## Net Suspension

### ◆ Traditional Net Suspension System

#### 3333 HUNTLAND EXPANDING WIRE

Stock Unit 30m (100') COIL in POLY BAG

- ◆ White plastic coated expanding high quality steel wire
- ◆ Easy to cut using standard pliers
- ◆ Polybag has a dispenser hole for ease of use

#### 3334 SCREW HOOKS

Stock Unit BOX 200

- ◆ Nickel plated
- ◆ Attractively packed in STUNNING gold boxes

#### 3335 SCREW EYES

Stock Unit BOX 200

- ◆ Nickel plated
- ◆ Attractively packed in STUNNING gold boxes



#### 1272 HARDWOOD DOWEL

Stock Unit 2.40m LENGTH

Code Dowel Size

127206	6mm x 2400mm	(¼" x 8')
127210	10mm x 2400mm	(¾" x 8')
127212	12mm x 2400mm	(½" x 8')
127215	15mm x 2400mm	(⅝" x 8')

- ◆ Ideal for use as Roman Blind rods



#### SCREW EYES and CUP HOOKS

#### 420 ELECTRO BRASSED SCREW EYES

Stock Unit BOX 200

Code	Overall Length	Shank Dia.	Eye Dia.
42020	20mm	2.0mm	6.5mm
42025	25mm	2.75mm	7.0mm
42030	30mm	2.75mm	8.5mm
42035	35mm	3.25mm	10mm
42040	40mm	3.25mm	10mm

Stock Unit BOX 100

42064 63mm 3.25mm 10mm

- ◆ Can be used as alternative cord guide on Austrian, Roman and Festoon blinds
- ◆ Can be used on laths to suspend curtain hooks in order to return curtains to the wall

#### 453 ZINC PLATED VINE EYES

Stock Unit BOX 100

Overall Length	Shank Dia.	Eye Dia.
75mm	4.5mm	11mm

- ◆ Can be used on laths to suspend curtain hooks in order to return curtains to the wall



#### 388 SHOULDERED CUP HOOKS

Stock Unit BOX 200

Code	Overall Length
38825	25mm
38838	38mm

- ◆ Electro Brassed steel

#### 372 SHOULDERED CUP HOOKS

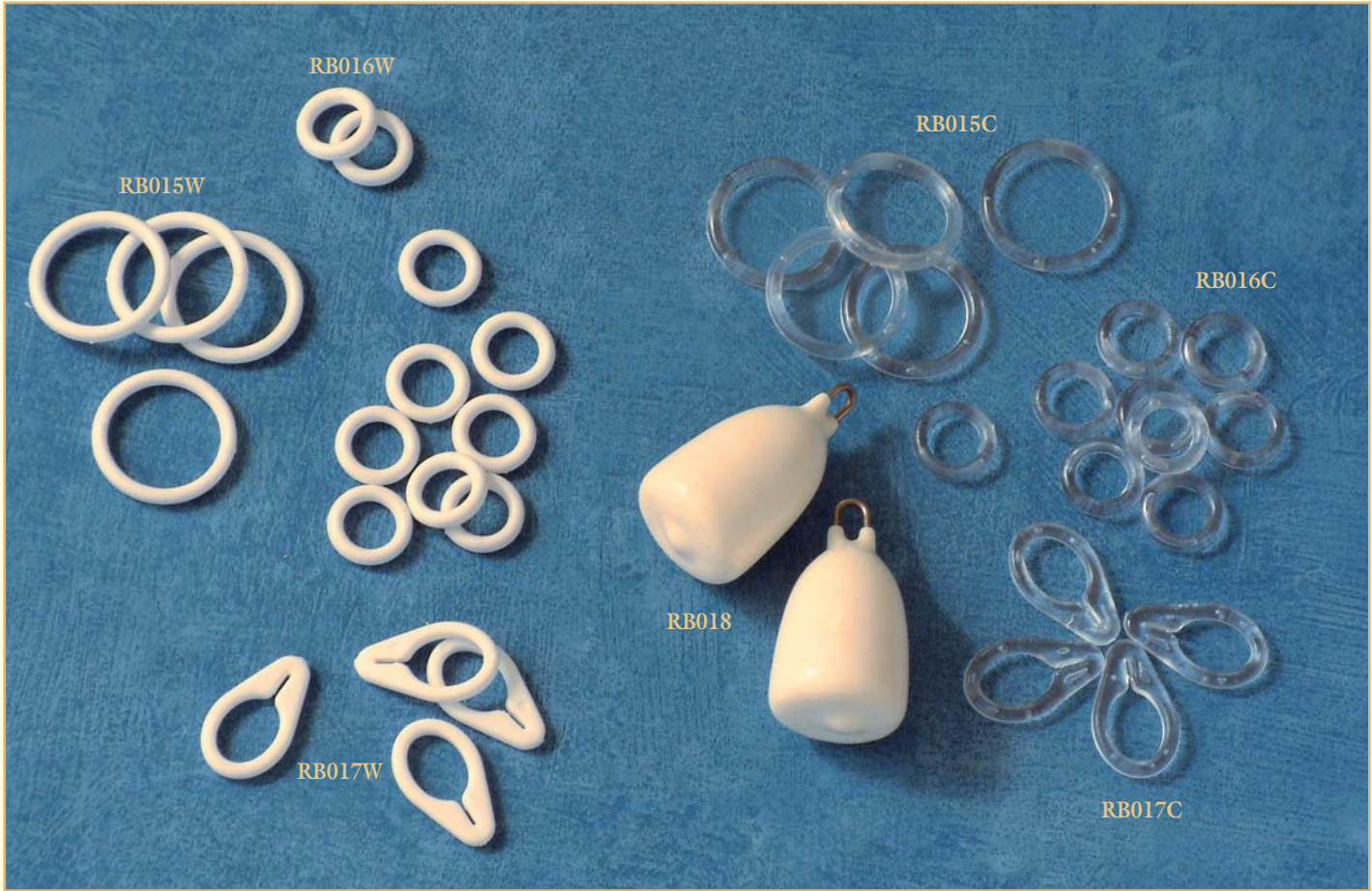
Stock Unit PACK 5

Code	Overall Length
37225	25mm
37232	32mm
37238	38mm

- ◆ White

# BLIND ACCESSORIES

# Blind Accessories



## RB015W LARGE WHITE EYELET RING

**Stock Unit** Bag x 100  
**Dimensions** 21 x 17mm  
 ♦ Made from strong polycarbonate

## RB016W SMALL WHITE EYELET RING

**Stock Unit** Bag x 100  
**Dimensions** 13 x 8mm  
 ♦ Made from strong polycarbonate

## RB017W WHITE OVAL “QUICK RELEASE” RING

**Stock Unit** Bag x 100  
**Dimensions** 21 x 13mm  
 ♦ Made from strong polycarbonate  
 ♦ Suitable for cord up to 1.5mm thick  
 ♦ To ANCHOR cord at the base of blinds. Simply pull your knotted cord into the slot  
 ♦ No need to struggle with the untying of knots, the cord can be easily released, enabling the blind to be cleaned leaving the cord in place for easy re-assembly – see [page J4](#) for further details

## RB015C LARGE CLEAR EYELET RING

**Stock Unit** Bag x 100  
**Dimensions** 21 x 17mm  
 ♦ Appears INVISIBLE when sewn to the back of the blind  
 ♦ Made from strong polycarbonate

## RB016C SMALL CLEAR EYELET RING

**Stock Unit** Bag x 100  
**Dimensions** 13 x 8mm  
 ♦ Appears INVISIBLE when sewn to the back of the blind  
 ♦ Made from strong polycarbonate

## RB017C CLEAR OVAL “QUICK RELEASE” RING

**Stock Unit** Bag x 100  
**Dimensions** 21 x 13mm  
 ♦ Appears INVISIBLE when sewn to the back of the blind  
 ♦ Made from strong polycarbonate

## RB018 BELL WEIGHT

**Stock Unit** EACH  
**Weight** 50gram  
**Dimensions** 40 x 20mm  
 ♦ PVC coated Lead Weight  
 ♦ Ideal for “wave” or soft fold Roman Blinds  
 ♦ Attach the Bell Weight to the Cord after the last small ring at the bottom fold of the blind



# BLIND ACCESSORIES

## Blind Accessories

### 838 10mm ROUND ROMAN BLIND ROD

Stock Unit 2.40m LENGTH

- ◆ Bars made from LIGHTWEIGHT uPVC
- ◆ Will not TWIST, WARP or SPLINTER
- ◆ EASY to cut, and can be easily joined and extended using the joining piece

### 839 10mm JOINING PIECE

Stock Unit EACH

- ◆ Fits neatly inside the Roman Blind Rod

### 841 21mm ROMAN BLIND BOTTOM HEM BAR

Stock Unit 2.40m LENGTH

- ◆ Oval shaped bottom bar 21 x 13mm
- ◆ Bars made from LIGHTWEIGHT uPVC
- ◆ Will not TWIST, WARP or SPLINTER
- ◆ EASY to cut, and can be easily joined and extended using the joining piece

### 842 21mm JOINING PIECE

Stock Unit EACH

- ◆ Fits neatly inside the Bottom Hem Bar

### 844 4mm FIBREGLASS ROD

Stock Unit 3.00m LENGTH

- ◆ Ideal for use as SLIMLINE rods for Blinds
- ◆ Approx. weight per 50cm - 10grm
- ✓ We recommend the use of gloves when handling and cutting this product, as small splinters may occur
- ✓ It is advisable NOT TO ROLL this product

### 126SH SINGLE HOLE CORD GUIDE

Stock Unit EACH

Dimensions 25 x 20 x 20mm high

### 127DH DOUBLE HOLE CORD GUIDE

Stock Unit EACH

Dimensions 36 x 20 x 20mm high

Woodscrew Gauge 4g or 5g

- ◆ Porcelain cord carrier for all styles of softshade blinds
- ◆ Fits on to any batten 20mm or wider
- ◆ Smooth internal channel will not chafe cords



Detail Shot



### 5803209 63mm WHITE PLASTIC CLEAT

Stock Unit EACH

Ear Projection 13mm

Woodscrew Gauge 4g

### 5802708 SMALL WHITE PLASTIC ACORN

Stock Unit EACH

Dimensions 24.5 x 17mm

### 5802805 LARGE WHITE PLASTIC ACORN

Stock Unit EACH

Dimensions 39 x 20mm

### 836 CHROME CORD WEIGHT

Stock Unit EACH

### 835 BRASS CORD WEIGHT

Stock Unit EACH

Weight 40g

Dimensions 34 x 28mm

# SEWING THREAD

# Sewing Thread

## 490 TRE-CHERCI COTTON SEWING THREAD

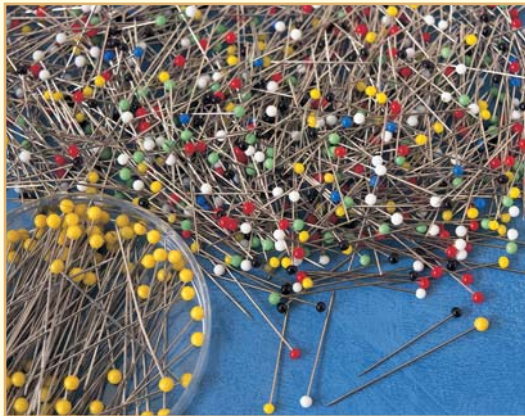
**Stock Unit** BOX 10 x 500m REELS  
**Colours available** 1212 IVORY  
8103 BEIGE  
1716 WHITE  
U UNBLEACHED  
MC MIXED COLOURS  
9750 BLACK

- ◆ 36 denier for button holing, embroidery, curtains and general upholstery etc
- ◆ 3 core 100% MERCERISED cotton
- ◆ Mercerised is a chemical treatment given to the thread to give it a lustre sheen

## 494 EPIC POLYESTER/COTTON SEWING THREAD

**Stock Unit** 1000m CONE or 5000m CONE  
**Available** U UNBLEACHED only

- ◆ 2 deniers available - 80 denier or 120 denier
- ◆ 80 denier for added strength especially when sewing by hand
- ◆ 120 denier for machine work or standard requirements
- ◆ Polyester with cotton core
- ◆ Formerly known as POLYFIL/KOBAN
- ◆ Wider range of colours available - please ask for details. (Minimum quantities apply)
- ◆ DENIER is a unit to measure fineness. The higher the denier the finer the thread



- ◆ Details of pins can be found on [page P1](#)